

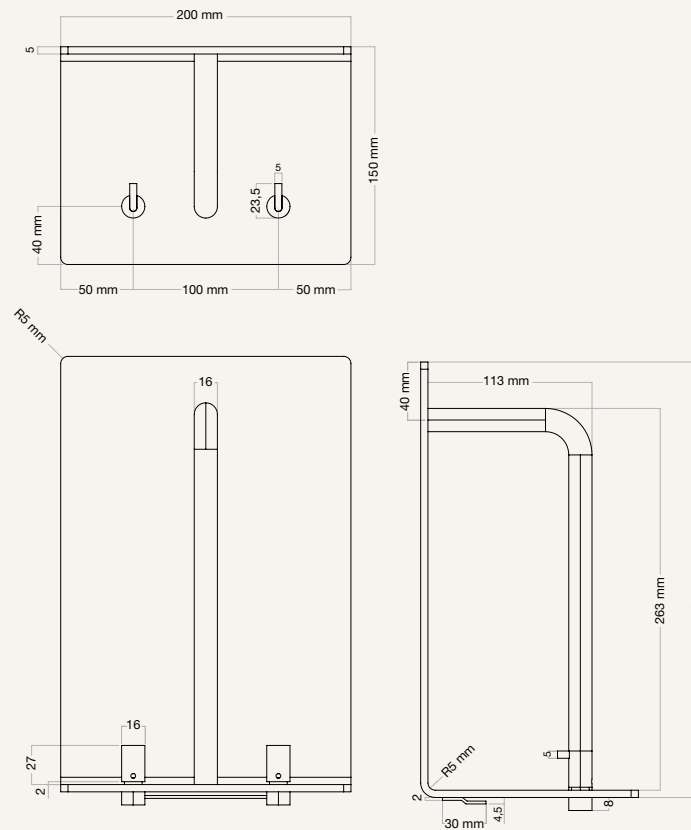
# FROST

D E N M A R K

## COAT RACK 4016

DESIGNED BY BØNNELYCKE MDD

PRODUCT DETAILS, TECHNICAL DETAILS  
AND FITTING INSTRUCTIONS



MATERIAL: ALUMINIUM / STAINLESS STEEL

AVAILABLE IN COMBINATIONS OF THE FROST FINISHES:



U4016-B

MATT BLACK /  
POLISHED STAINLESS



U4016-CB

MATT BLACK /  
POLISHED COPPER



U4016-GB

MATT BLACK /  
POLISHED GOLD



U4016-BB

MATT BLACK /  
POLISHED BLACK



U4016-W

MATT WHITE /  
POLISHED STAINLESS



U4016-CW

MATT WHITE /  
POLISHED COPPER

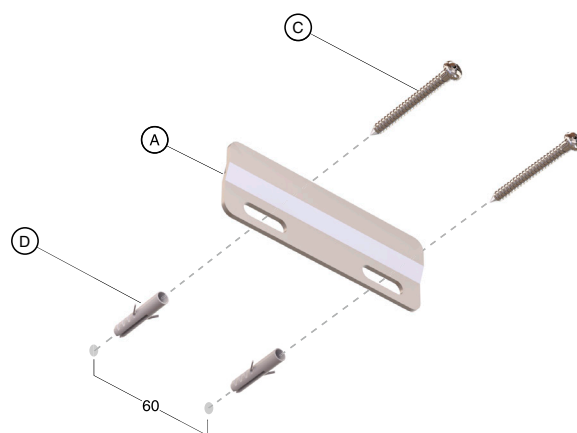


U4016-GW

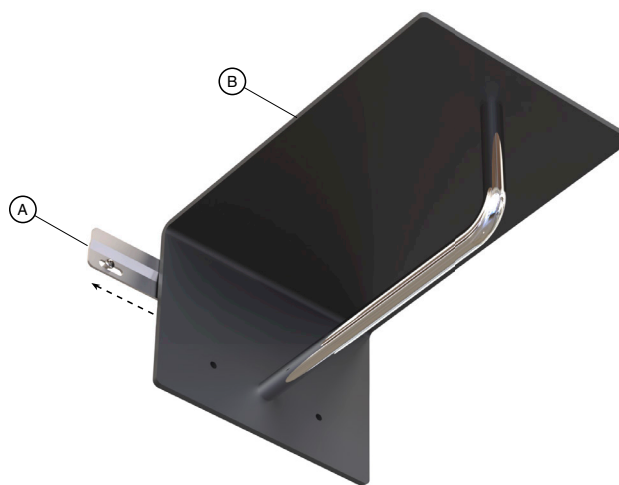
MATT WHITE /  
POLISHED GOLD

## MOUNTING

- 1 Secure the mounting bar (A) on the wall as illustrated. Use two (D) wall plugs (Ø8x38) and (C) screws (Ø5x40).



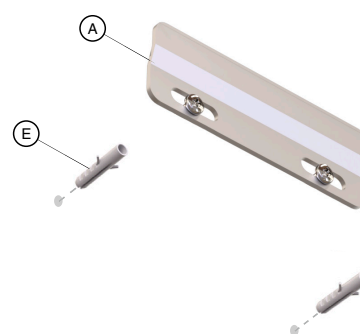
- 2 Slide the Coat Rack (B) onto the mounting bar (A).



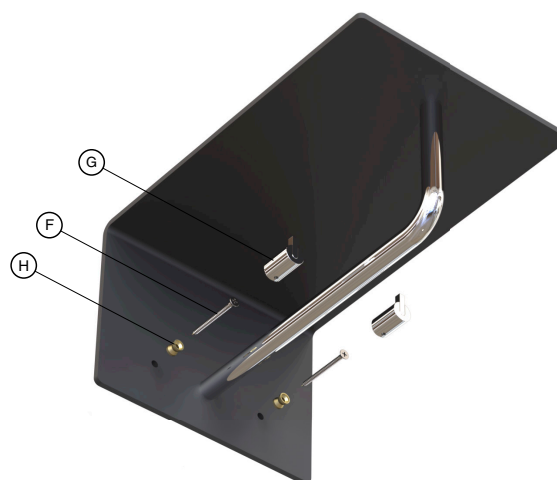
- 3 Mark the placement of two screw holes as illustrated. Then slide the coat rack (B) off the mounting bar (A).



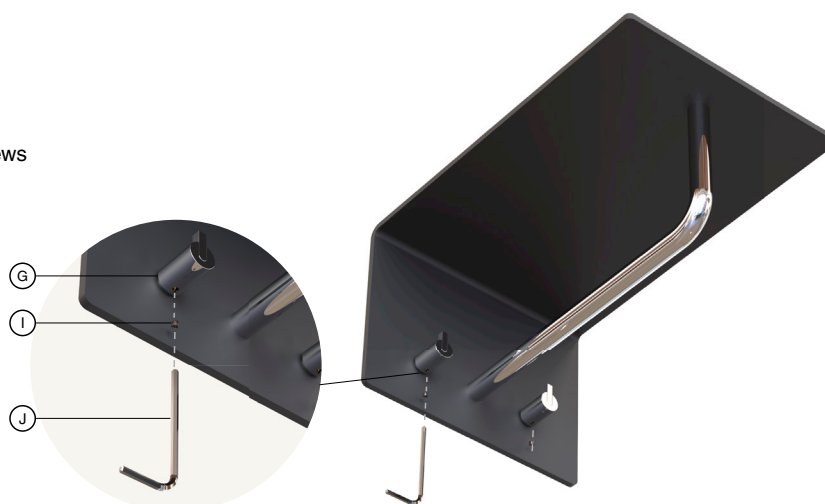
- 4 Drill the marked holes and insert the two (E) wall plugs (Ø6x30). Then slide the coat rack (B) back on to the mounting bar (A).



- 5 Secure the coat rack with the (H) brass inserts and (F) screws (Ø4x39). Place the (G) hooks on the brass inserts.



- 6 Secure the (G) hooks by tightening (I) set screws with the allen key (J).



#### **CLEANING AND MAINTENANCE**

Surfaces should be cleaned with a microfiber cloth, glass cleaner or other non abrasive and gentle agents.

#### **ATTENTION:**

Never use solvents or aggressive household cleaners like bleach, acids (e.g. descalers) or ammonia-based bathroom cleaner to clean the product. Steel wool and hard brushes can permanently damage the surface of the steel.

#### **EXCLUSION OF LIABILITY**

FROST accepts no liability whatsoever for damage to persons or property that occurs or has occurred as a result of improper installation or maintenance, particularly if the safety instructions and other points to note listed are not or have not been observed in full.

#### **WARNING AND HAZARD NOTICES**

Improper mounting or use can lead to accidents and serious injuries.

**[www.frostdenmark.com](http://www.frostdenmark.com)**

Bavne Alle 32, 8370 Hadsten, Denmark

E-mail: [info@frost.dk](mailto:info@frost.dk) • Phone: (+45) 87 61 00 32

We are also to be found as frostdenmark on Facebook,  
Instagram, Pinterest and LinkedIn

