

# FROST

DENMARK

## QUADRA SOAP DISPENSER 5

Fitting instruction  
Montageanleitung  
Monteringsvejledning  
Monteringsvægledning  
Montage hanleiding  
Manuel de montage

Q3050



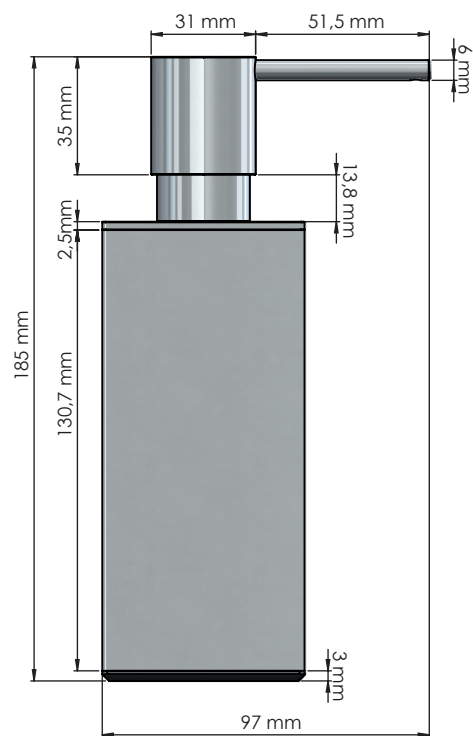
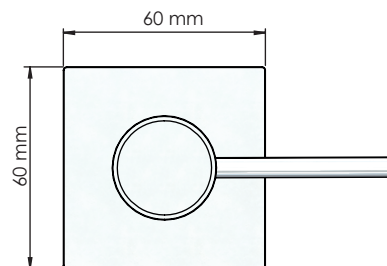
### Exclusion of liability

FROST accepts no liability whatsoever for damage to persons or property that occurs or has occurred as a result of improper installation or maintenance, particularly if the safety instructions and other points to note listed are not or have not been observed in full.

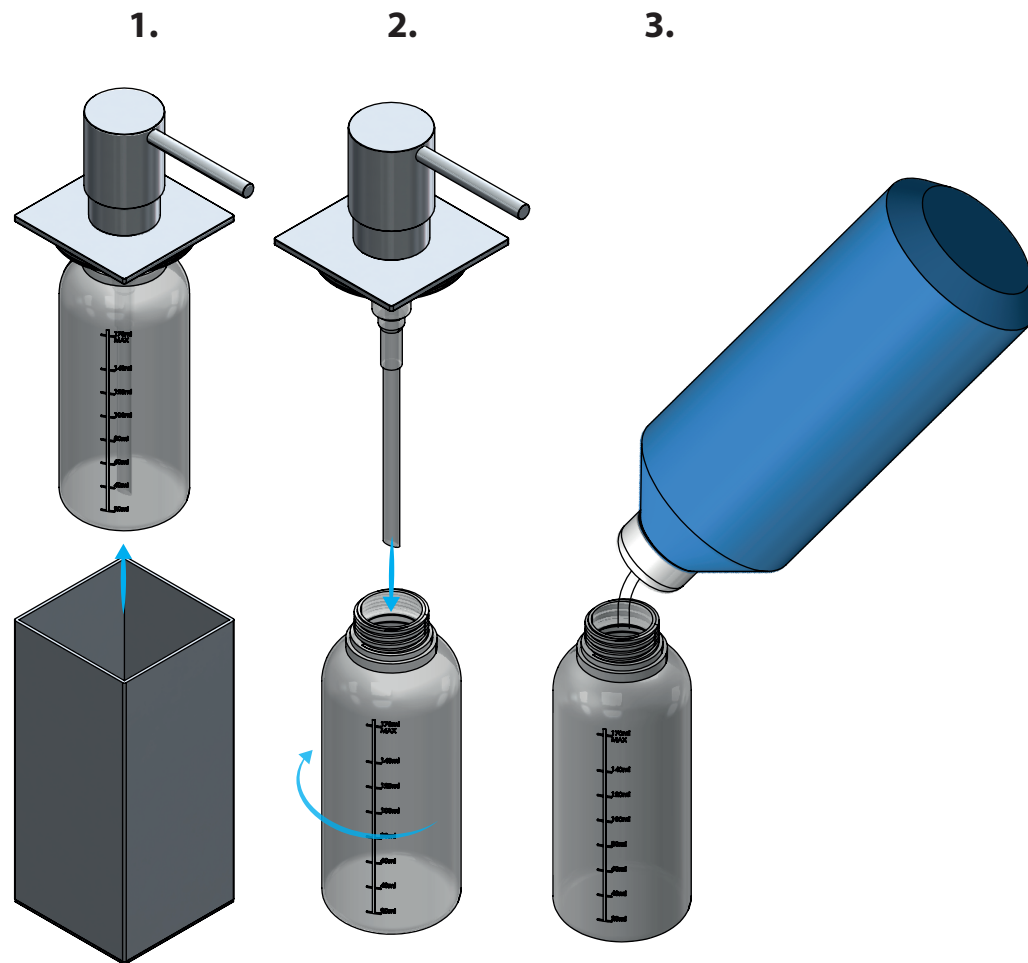
### Warning and hazard notices

Improper mounting or use can lead to accidents and serious injuries.

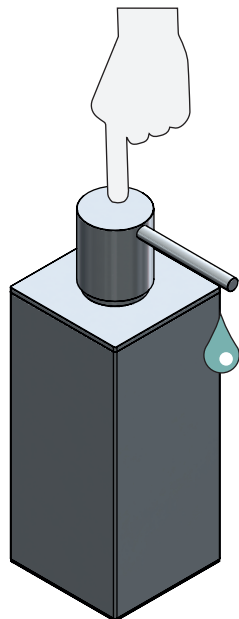
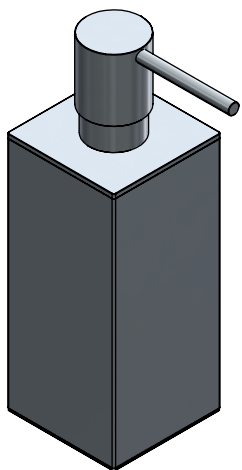
170 ml



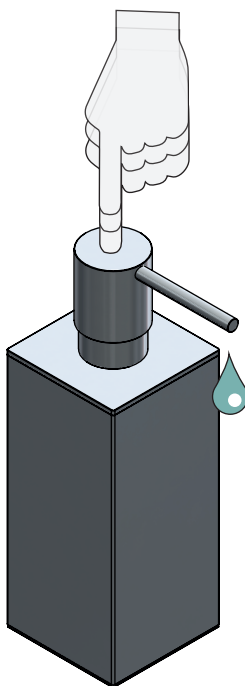
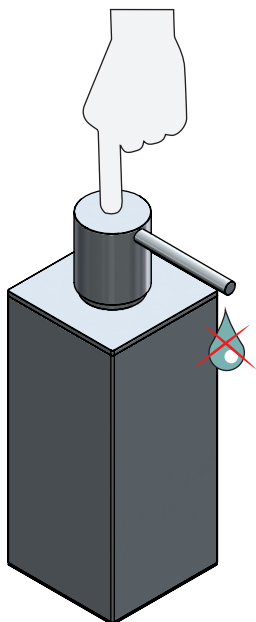
Liquid soap	Cremetvål	pH Neutral
Cremeseife	Crème zeep	pH Neutraal
Cremesæbe	Savon crème	pH Neutre



Operating Buk  
Bedienung Bedienung  
Betjening Emploi



Maintenance Skötsel  
Pflege Verpleging  
Vedligeholdelse Entretien



## MAINTAINING THE DISPENSER

If the dispenser is not used for a long period of time and becomes clogged, pour warm water into the dispenser and gently pump it to clear the blockage.

All surfaces should be cleaned with a microfiber cloth, glass cleaner or other non-abrasive and gentle agents. If stained, clean with warm soapy water. Use a soft cloth to wipe dry. Soap and cleaning agents must be regularly removed from stainless steel surfaces in order to prevent corrosion-like residues.

## ATTENTION

- Never try inserting a sharp object e.g. pin into the soap nozzle. This can irreparably damage the pump and void the warranty.
- Never use solvents or aggressive household cleaners like bleach, acids (e.g. descalers) or ammonia-based bathroom cleaner to clean the product.
- Steel wool and hard brushes can permanently damage the surface of the steel.
- Should brown deposits appear around the lid or pump, remove with soapy water and a soft brush. Hard deposits can be scratched off with your fingernail. In order to avoid this, try changing to a liquid soap with a neutral PH.

**FROST**  
DENMARK

Bavne Allé 32  
DK-8370 Hadsten  
+45 8761 0032  
info@frost.dk

www.frostdenmark.com

Q3050.185.10



Q3050.185.25



Q3050.185.55



Q3050.185.50



Q3050.185.65



Q3050.185.60



Q3050.185.74



Q3050.185.75



Q3050.185.76



**Material:** Stainless steel, AISI 304

**Design:** Bønnelycke mdd

**Manufacturer:** FROST A/S

## SOAP DISPENSER 5

