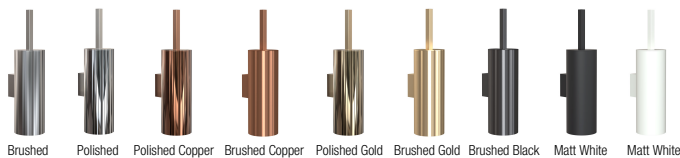
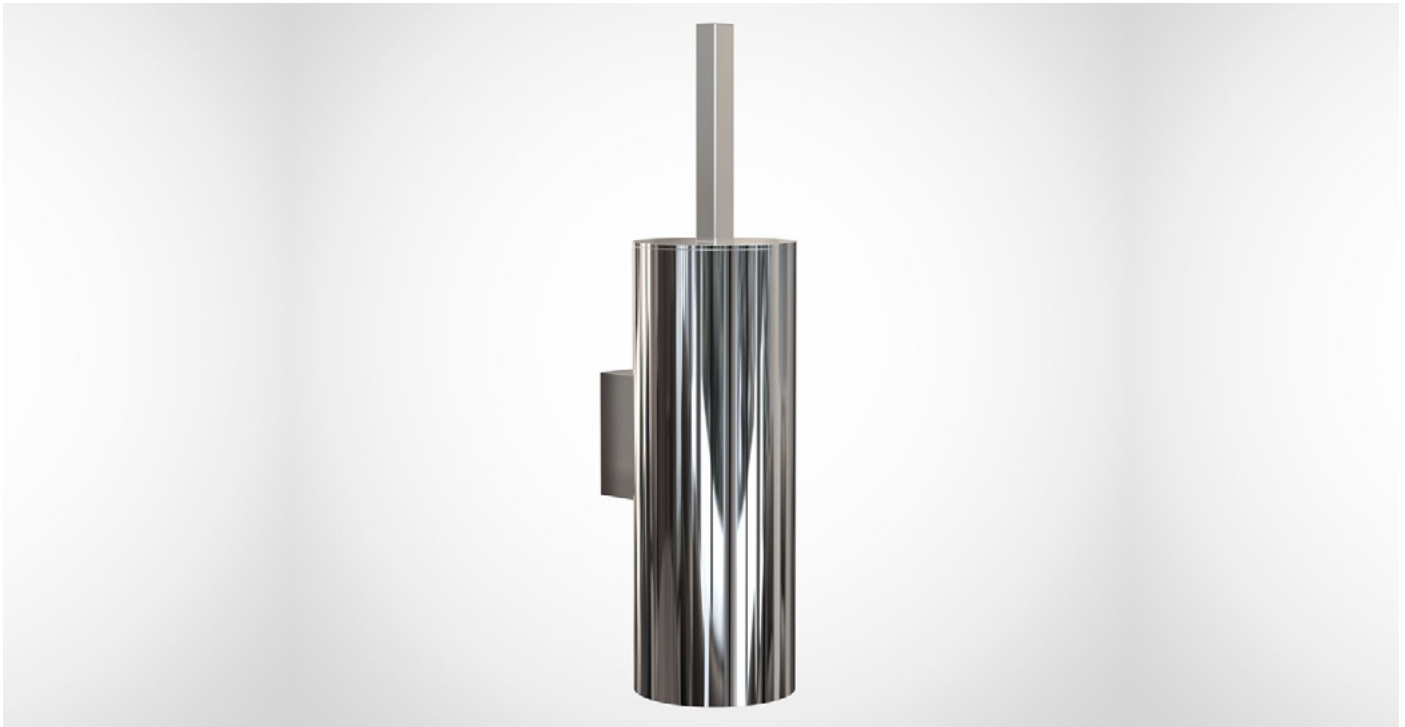


QUADRA TOILET BRUSH 4 - CARE & MOUNTING INSTRUCTIONS

Q3023.365.XX



Material: Stainless steel, AISI 304

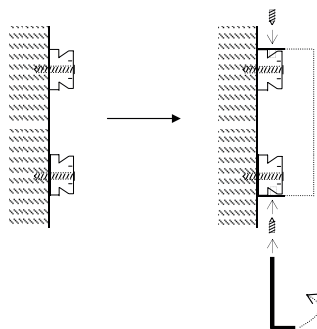
Design: Bønnelycke mdd
Manufacturer: FROST A/S

Dimensions:

Height: 365 mm
 Diameter: Ø89 mm
 Projection: 114 mm

Mounting:

Screw the brass inserts on the wall. Make sure they are mounted as illustrated. Place the product on the inserts and use the allen key to tighten the set screws.



Cleaning and maintenance:

All surfaces should be cleaned with a microfiber cloth, glass cleaner or other non-abrasive and gentle agents. Use a soft dry cloth to wipe dry. When polishing steel with a hairline finish, please remember always to polish with the grain of the steel.

Attention:

Never use solvents or aggressive household cleaners like bleach, acids (e.g. descalers) or ammonia-based bathroom cleaner to clean the product. Steel wool and hard brushes can permanently damage the surface of the steel.

Practical information:

In the case of manufacturing defects, please contact the store where the product was purchased. Always remember to bring your receipt.

Exclusion of liability:

FROST accepts no liability whatsoever for damage to persons or property that occurs as a result of improper installation or maintenance, particularly if the instructions have not been observed in full.