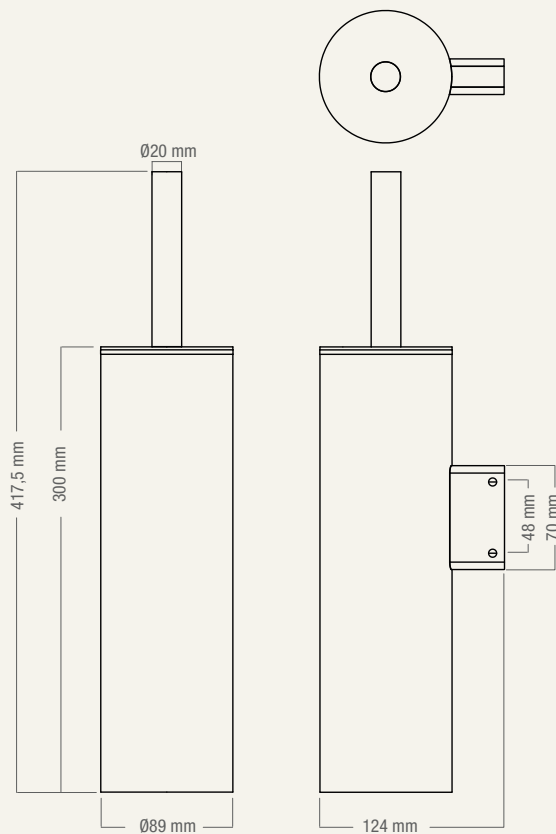


**FROST**  
DENMARK

# TOILET BRUSH 1911, F/ WALL MOUNTING

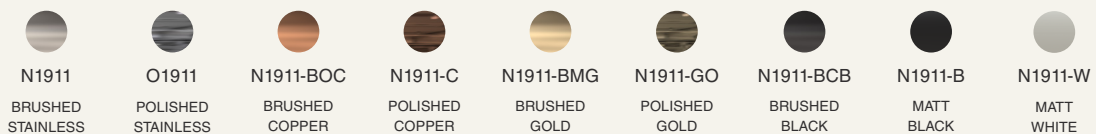
DESIGNED BY BØNNELYCKE MDD

PRODUCT DETAILS, TECHNICAL DETAILS  
AND FITTING INSTRUCTIONS



MATERIAL: STAINLESS STEEL

AVAILABLE IN THE NINE FROST FINISHES:

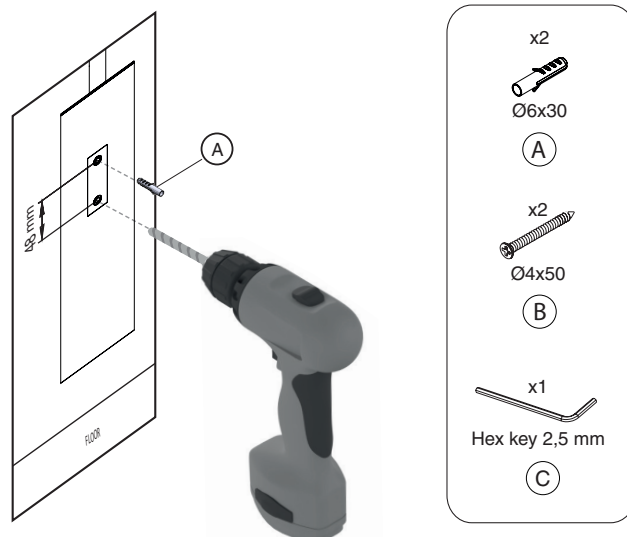


## MOUNTING

1

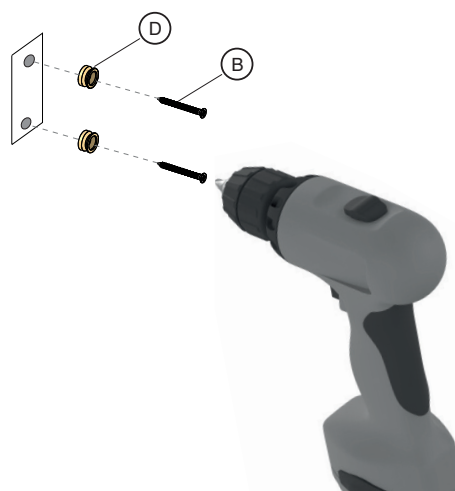
Place the Toilet Brush in the desired position and mark the screw holes as illustrated, with a CC distance of 48 mm.

Drill the marked holes using a 6 mm drill bit and insert the enclosed Ø6x30 mm wall plugs (A).



2

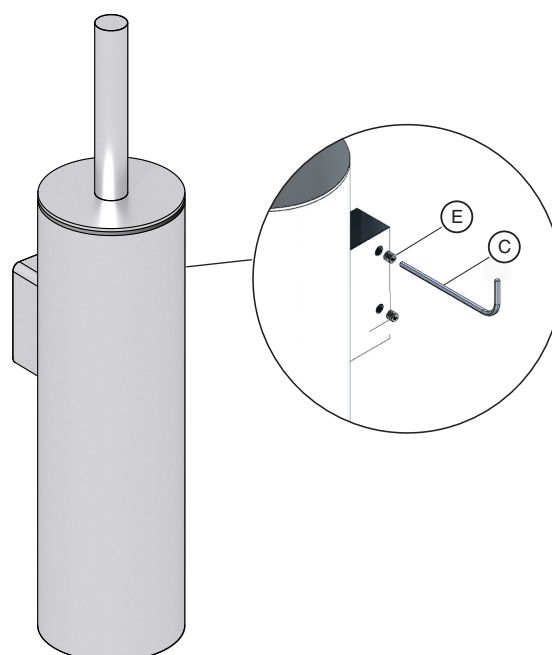
Secure the brass inserts (D) on the wall with the enclosed Ø4x50 mm screws (B) and use a Phillips screwdriver with bit PH2 to tighten the screws.



3

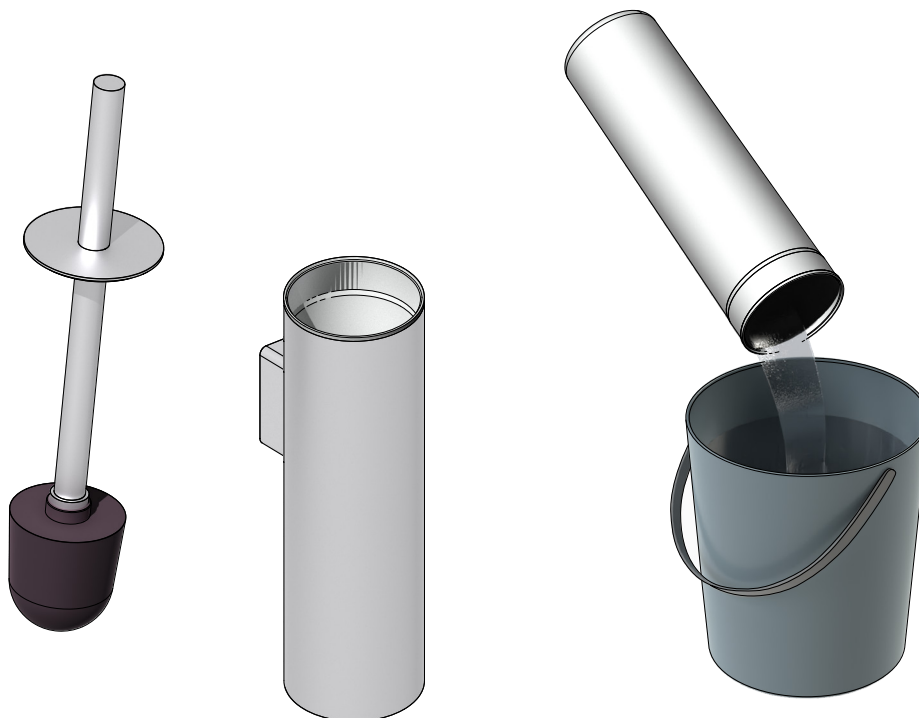
Press the Toilet Brush on to the brass inserts.

Securely tighten the two set screws (E) on the side with the hex key (C).



## CARE & MAINTENANCE

- 1 To maintain your toilet brush, regularly remove the plastic insert for easy cleaning. Rinse it with warm water and mild soap, then let it dry thoroughly before reassembling to ensure good hygiene and longevity.



## REPLACEMENTS FOR TOILET BRUSH 1911

- 1 **TOILET BRUSH HEAD**  
Replacement toilet brush heads are available for purchase. Simply unscrew the old brush head, reattach the new one, and it's ready for use again.

Spare part item number: RESN1910

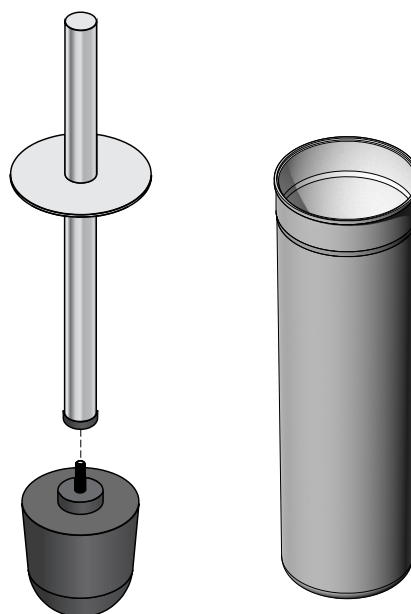
### PLASTIC INSERT

The plastic insert is also available as a spare part in either black or white plastic.

To replace it, simply remove the old insert and replace with the new one.

Spare part item number for black: RESN1910-1-B

Spare part item number for white: RESN1910-1-W



#### **CLEANING AND MAINTENANCE**

Surfaces should be cleaned with a microfiber cloth, glass cleaner or other non abrasive and gentle agents.

#### **ATTENTION:**

Never use solvents or aggressive household cleaners like bleach, acids (e.g. descalers) or ammonia-based bathroom cleaner to clean the product. Steel wool and hard brushes can permanently damage the surface of the steel.

#### **EXCLUSION OF LIABILITY**

FROST accepts no liability whatsoever for damage to persons or property that occurs or has occurred as a result of improper installation or maintenance, particularly if the safety instructions and other points to note listed are not or have not been observed in full.

#### **WARNING AND HAZARD NOTICES**

Improper mounting or use can lead to accidents and serious injuries.

**[www.frostdenmark.com](http://www.frostdenmark.com)**

Bavne Alle 32, 8370 Hadsten, Denmark

E-mail: [info@frost.dk](mailto:info@frost.dk) • Phone: (+45) 87 61 00 32

We are also to be found as frostdenmark on Facebook,  
Instagram, Pinterest and LinkedIn

