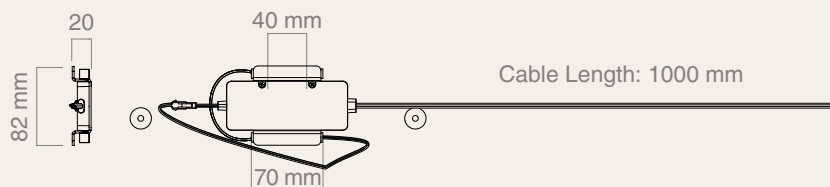


**FROST**  
DENMARK

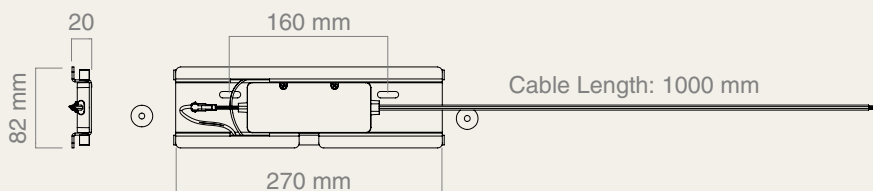
# BACKLIGHT BARS FOR SHELVES

PRODUCT DETAILS, TECHNICAL DETAILS  
AND FITTING INSTRUCTIONS

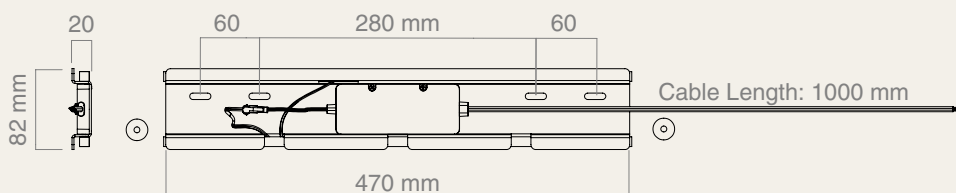
## BACKLIGHT BAR 4000-200



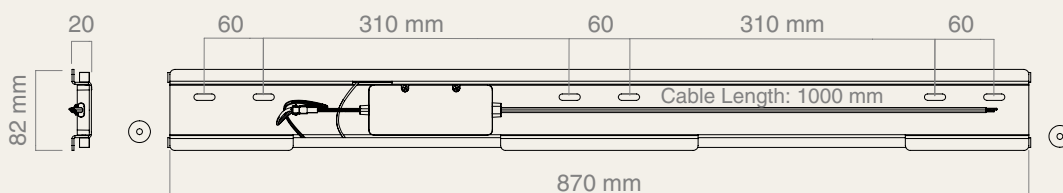
## BACKLIGHT BAR 4000-400



## BACKLIGHT BAR 4000-600



## BACKLIGHT BAR 4000-1000



MATERIAL: STAINLESS STEEL

LIGHT NUANCE: 2700K

DESIGNED BY BØNNELYCKE MDD

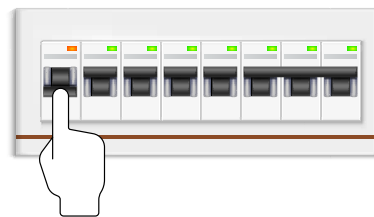
## BEFORE INSTALLING PLEASE NOTE

In certain countries, the electrical installation must be carried out by an authorized electrical contractor.



Always turn off the power to the circuit before connecting the power supply.

The FROST Backlight Bars is not suitable for bathrooms and wet areas.



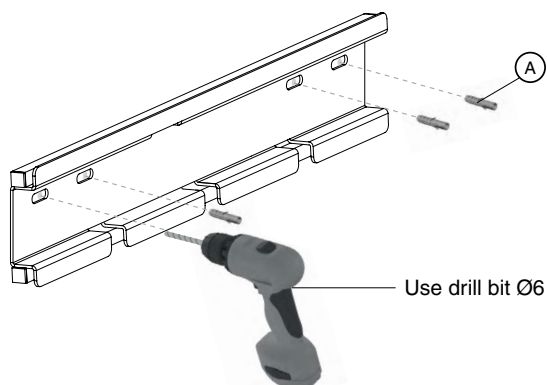
## MOUNTING OF THE BACKPLATE

Mark the placement of screw holes for mounting the backplate on the wall as illustrated.

1

Drill out the marked holes with a 6 mm drill bit and insert the enclosed Ø6x30 mm wall plugs (A).

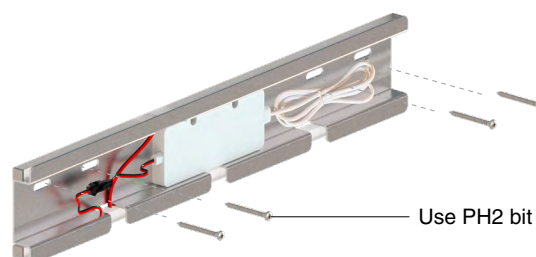
NOTE: The number of wall plugs needed depends on which length of backlight bar you are mounting  
(See illustration on the front page)



2

Secure the backlight bar (B) on the wall with the enclosed Ø4x50 mm screws (C) and use a Phillips screwdriver with bit PH2 to tighten the screws.

NOTE: The number of screws needed depends on which length of backlight bar you are mounting.



## CONNECT THE TRANSFORMER

Connect the transformer (D) to the LED on the backplate (C) by connecting the two back plugs as illustrated.

Secure the transformer on the wall with the two enclosed Ø3x20mm screws (E).

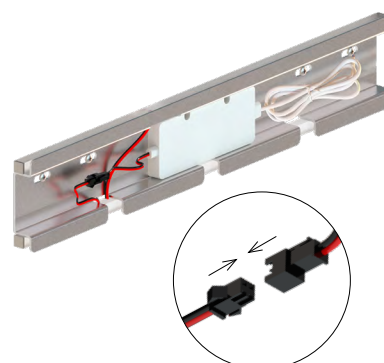
3

### TRANSFORMER INFORMATION:

INPUT: 185-265VAC 50/60Hz

OUTPUT: 12VDC +/-3% 3A 36W MAX

Protection Class: IP44

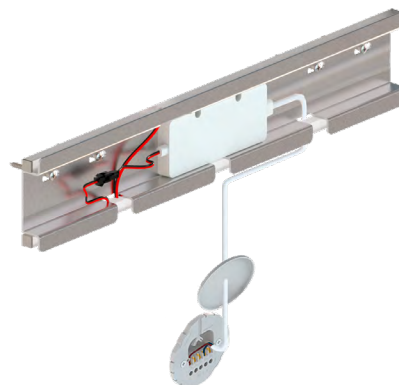


## CONNECT TO THE MAIR POWER - OPTION 1

We recommend connecting the transformer directly to the main power supply placed behind the mirror as illustrated.

- ④ This is done by wiring the cable ends on the transformer directly to the outlet.

If this option is not possible and the installation needs extra cable length to reach the main power supply, please see Option 2.

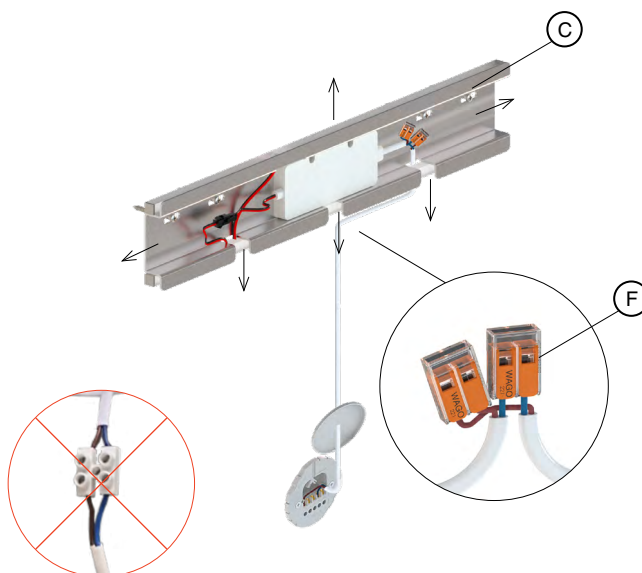


## CONNECT TO MAIN POWER - OPTION 2

If the installation needs extra cable length, please use the two enclosed cable connectors ⑥ to wire the extra cable to the main power supply.

- ⑤ The cable can be led through one of the four slots in the backplate, depending on the position of the outlet.

**CAUTION:** When used in the damp areas, do not leave any exposed wire connections. Please contact an authorized electrical contractor for extra guidance.



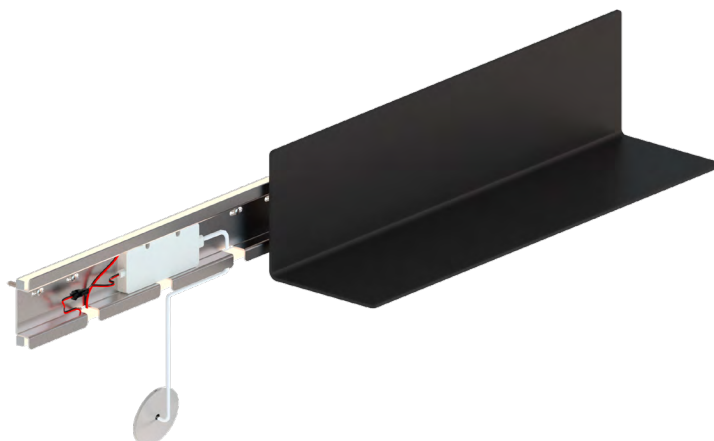
Slide your shelf onto the backlight bar. Now your shelf is ready for use.

**LED INFORMATION:**  
Color temperature: 2700K  
Protection Class: IP20

⑥



Scan or click the QR-code to get further information regarding the kelvin color temperature scale



#### **CLEANING AND MAINTENANCE**

Surfaces should be cleaned with a microfiber cloth, glass cleaner or other non abrasive and gentle agents.

#### **ATTENTION:**

Never use solvents or aggressive household cleaners like bleach, acids (e.g. descalers) or ammonia-based bathroom cleaner to clean the product. Steel wool and hard brushes can permanently damage the surface of the steel.

#### **EXCLUSION OF LIABILITY**

FROST accepts no liability whatsoever for damage to persons or property that occurs or has occurred as a result of improper installation or maintenance, particularly if the safety instructions and other points to note listed are not or have not been observed in full.

#### **WARNING AND HAZARD NOTICES**

Improper mounting or use can lead to accidents and serious injuries.

**[www.frostdenmark.com](http://www.frostdenmark.com)**

Bavne Alle 32, 8370 Hadsten, Denmark

E-mail: [info@frost.dk](mailto:info@frost.dk) • Phone: (+45) 87 61 00 32

We are also to be found as frostdenmark on Facebook,  
Instagram, Pinterest and LinkedIn

