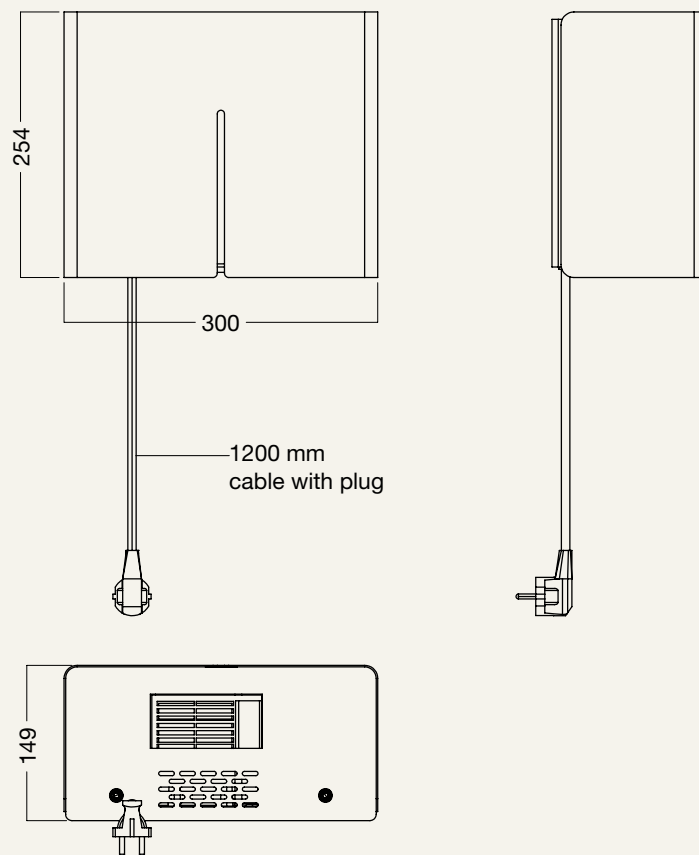


FROST
DENMARK

HAND DRYER 1994

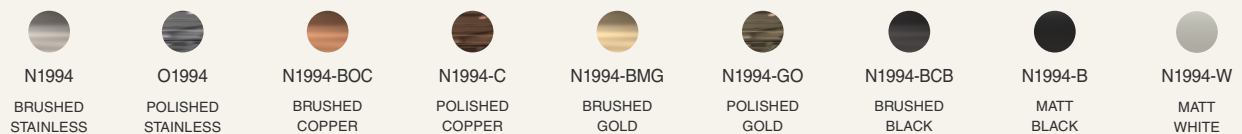
DESIGNED BY BØNNELYCKE MDD

PRODUCT DETAILS, TECHNICAL DETAILS
AND FITTING INSTRUCTIONS



MATERIAL: STAINLESS STEEL

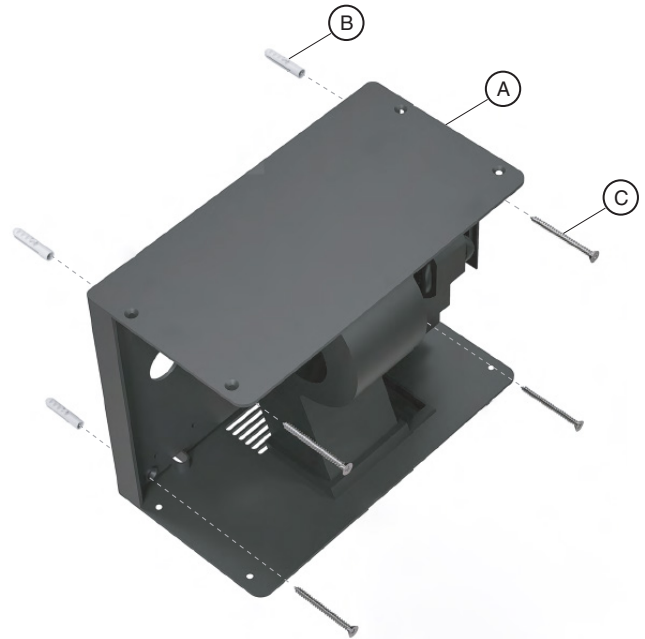
AVAILABLE IN THE NINE FROST FINISHES:



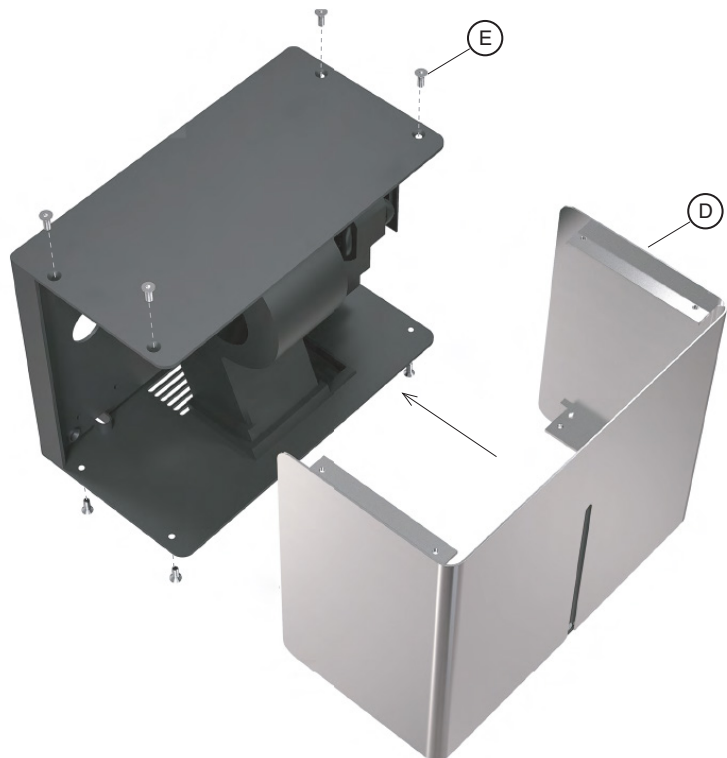
MOUNTING OF THE HAND DRYER

- 1 Start by mounting the wall bracket unit (A) that contains all the electronic components.

Mark the position and drill out the marked holes. Insert the wall plugs (B) and use the four enclosed screws (C) to secure the unit to the wall, with a screwdriver/power driver.



- 2 Once the wall bracket is securely fixed, attach the outer Stainless Steel Cover (D) using the eight enclosed M5 countersunk Umbraco screws (E).



ELECTRICAL CONNECTION

! The electrical connection is possible in two ways:

① The Hand Dryer can be connected using the power cable with the plug, exiting from the bottom of the unit.

This option is useful when there is no in-wall cable routing, or when a standard plug-in solution is preferred for easy access or service.

② The Hand Dryer can also be hard-wired directly through the back of the unit.

This solution is ideal for installations where the power cable is routed inside the wall, creating a clean, hidden connection. Ensure that the electrician prepares the wall opening before mounting the bracket, as the electronic unit will cover the cable entry point.

Please contact a professional electrical contractor for this step.



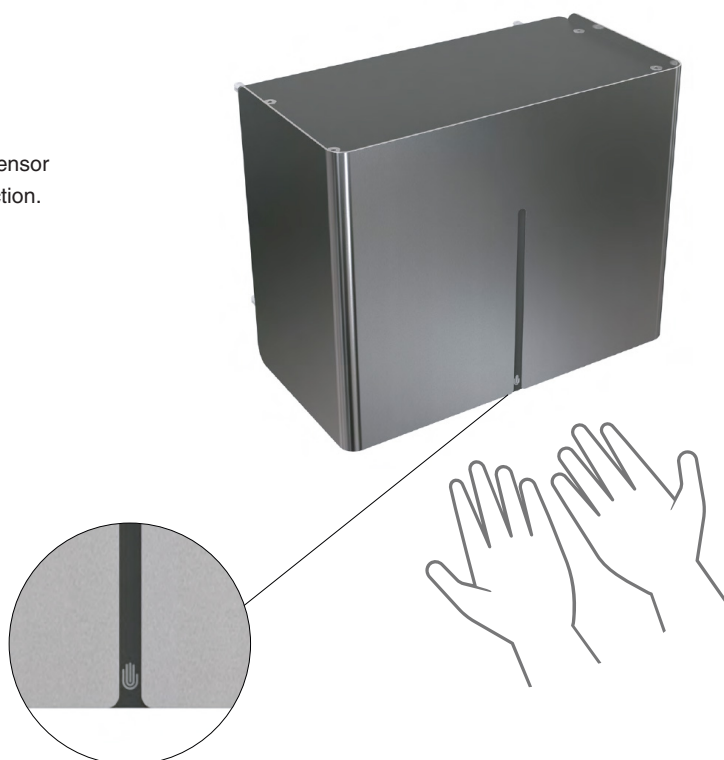
! The Hand Dryer is now ready for use.
On the front, you will see a small air icon indicating the airflow.

Place your hands under the sensor area, and the sensor will register your hands and activate the drying function.

TECHNICAL DETAILS

Operating voltage: 220-240 V~; 50 Hz; 2500 W

Weight: 5 kg



Laserprinted icon to
indicate placement of airflow

CLEANING AND MAINTENANCE

Surfaces should be cleaned with a microfiber cloth, glass cleaner or other non abrasive and gentle agents.

ATTENTION:

Never use solvents or aggressive household cleaners like bleach, acids (e.g. descalers) or ammonia-based bathroom cleaner to clean the product. Steel wool and hard brushes can permanently damage the surface of the steel.

EXCLUSION OF LIABILITY

FROST accepts no liability whatsoever for damage to persons or property that occurs or has occurred as a result of improper installation or maintenance, particularly if the safety instructions and other points to note listed are not or have not been observed in full.

WARNING AND HAZARD NOTICES

Improper mounting or use can lead to accidents and serious injuries.

www.frostdenmark.com

Bavne Alle 32, 8370 Hadsten, Denmark

E-mail: info@frost.dk • Phone: (+45) 87 61 00 32

We are also to be found as frostdenmark on Facebook,
Instagram, Pinterest and LinkedIn

