

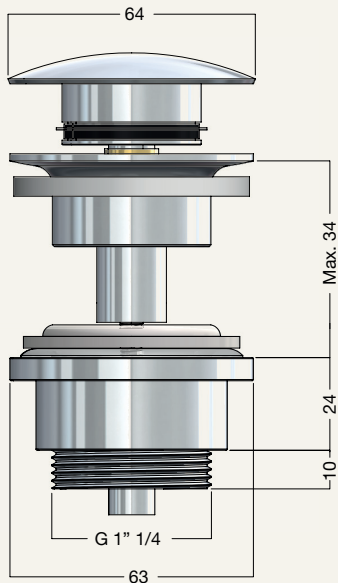
# FROST

D E N M A R K

## POP UP PLUG 1990

DESIGNED BY BØNNELYCKE MDD

PRODUCT DETAILS, TECHNICAL DETAILS  
AND FITTING INSTRUCTIONS



MATERIAL: STAINLESS STEEL

AVAILABLE IN THE NINE FROST FINISHES:



F1990  
BRUSHED  
STAINLESS



F1990-P  
POLISHED  
STAINLESS



F1990-BOC  
BRUSHED  
COPPER



F1990-C  
POLISHED  
COPPER



F1990-BMG  
BRUSHED  
GOLD



F1990-GO  
POLISHED  
GOLD



F1990-BCB  
BRUSHED  
BLACK



F1990-B  
MATT  
BLACK

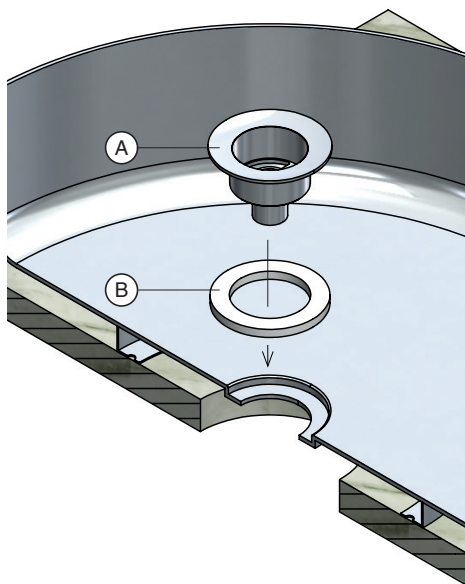


F1990-W  
MATT  
WHITE

## MOUNTING

- 1 Place the plug body (A) into the sink hole from above.

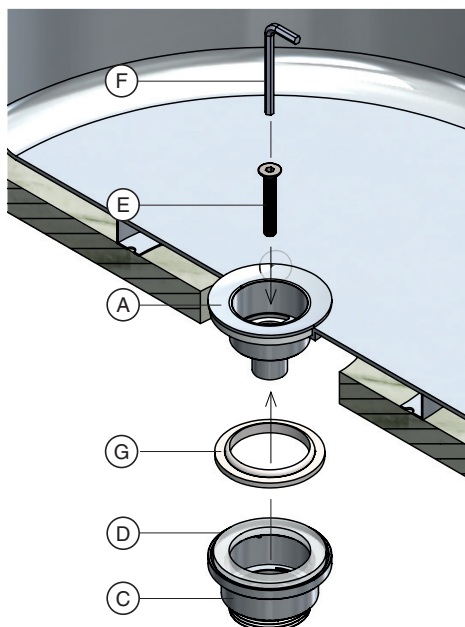
Make sure the EVA washer (B) is positioned between the plug flange and the sink surface to form a watertight seal.



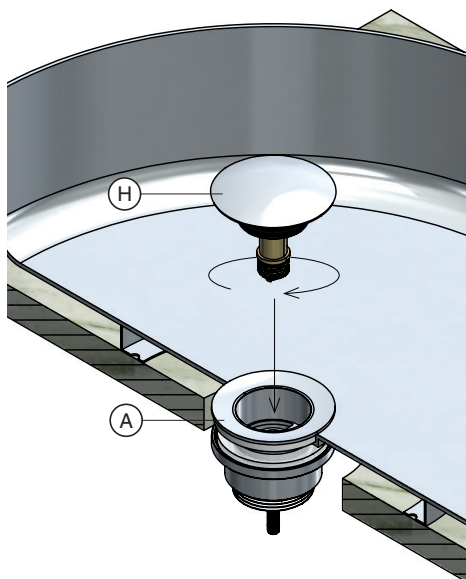
- 2 Secure the plug body by placing the plug nut (C) with the white transparent washer (D) underneath the sink.

Insert the M6x40 (E) Umbraco screw through the plug body and into the nut, then tighten with a 4 mm Allen key (F).

For ceramic sinks, only the transparent washer (D) is needed, but for stainless steel sinks, please also include the white silicone washer (G) as shown in the illustration.



- 
- 3 Screw the pop-up top (H) into the plug body (A) until it has a tight fit.

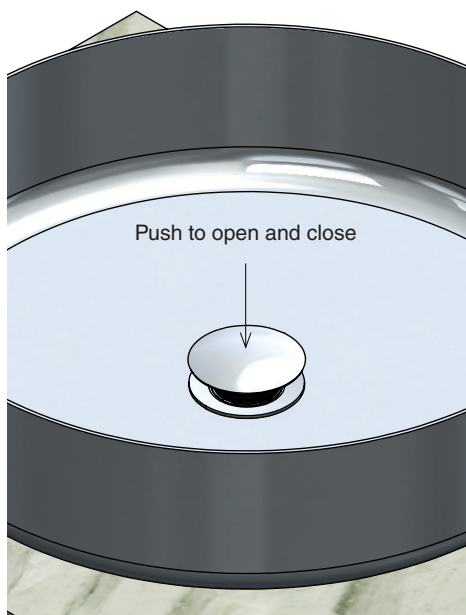


- 4 Push the top of the plug to open and close it.

Once the pop-up plug is installed, connect it to the water trap.

Installation guides for Frost's P-Trap 1997 can be found on [frostdenmark.com](http://frostdenmark.com)

NB! The pop-up plug is without overflow.



### **CLEANING AND MAINTENANCE**

Surfaces should be cleaned with a microfiber cloth, glass cleaner or other non abrasive and gentle agents.

### **ATTENTION:**

Never use solvents or aggressive household cleaners like bleach, acids (e.g. descalers) or ammonia-based bathroom cleaner to clean the product. Steel wool and hard brushes can permanently damage the surface of the steel.

### **EXCLUSION OF LIABILITY**

FROST accepts no liability whatsoever for damage to persons or property that occurs or has occurred as a result of improper installation or maintenance, particularly if the safety instructions and other points to note listed are not or have not been observed in full.

### **WARNING AND HAZARD NOTICES**

Improper mounting or use can lead to accidents and serious injuries.

**[www.frostdenmark.com](http://www.frostdenmark.com)**

Bavne Alle 32, 8370 Hadsten, Denmark

E-mail: [info@frost.dk](mailto:info@frost.dk) • Phone: (+45) 87 61 00 32

We are also to be found as frostdenmark on Facebook,  
Instagram, Pinterest and LinkedIn

