

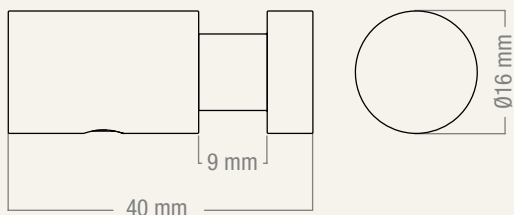
FROST

D E N M A R K

HOOK 1000 & 1000-1

DESIGNED BY FROST DENMARK

PRODUCT DETAILS, TECHNICAL DETAILS
AND FITTING INSTRUCTIONS



MATERIAL: STAINLESS STEEL

AVAILABLE IN THE FROST FINISHES:



N1000
N1000-1

BRUSHED
STAINLESS



O1000
O1000-1

POLISHED
STAINLESS



N1000-B

MATT
BLACK

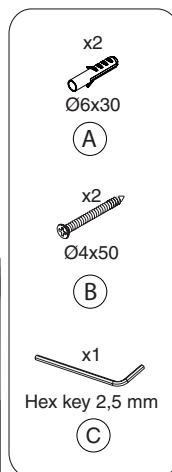
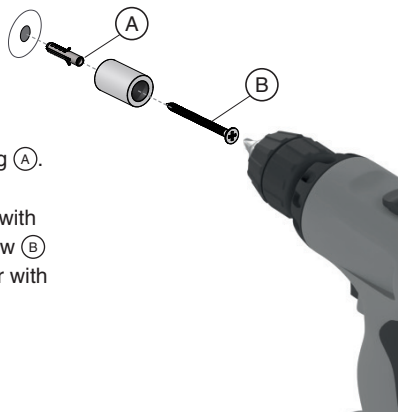


MOUNTING

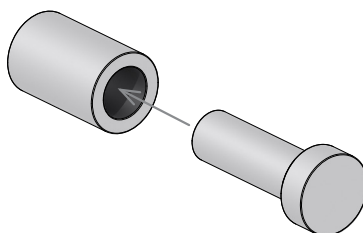
- 1 Place the Hook in the desired position and set a mark for the screw hole.

Drill the marked hole using a 6 mm drill bit and insert the enclosed $\text{Ø}6 \times 30$ mm wall plug (A).

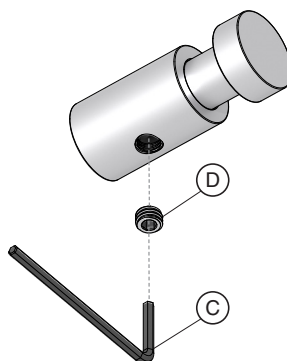
Secure the insert on the wall with the enclosed $\text{Ø}4 \times 50$ mm screw (B) and use a Phillips screwdriver with bit PH2 to tighten.



- 2 Press the Hook into the insert.



- 3 Securely tighten the set screw (D) underneath with the hex key (C).



CLEANING AND MAINTENANCE

Surfaces should be cleaned with a microfiber cloth, glass cleaner or other non abrasive and gentle agents.

ATTENTION:

Never use solvents or aggressive household cleaners like bleach, acids (e.g. descalers) or ammonia-based bathroom cleaner to clean the product. Steel wool and hard brushes can permanently damage the surface of the steel.

EXCLUSION OF LIABILITY

FROST accepts no liability whatsoever for damage to persons or property that occurs or has occurred as a result of improper installation or maintenance, particularly if the safety instructions and other points to note listed are not or have not been observed in full.

WARNING AND HAZARD NOTICES

Improper mounting or use can lead to accidents and serious injuries.

www.frostdenmark.com

Bavne Alle 32, 8370 Hadsten, Denmark

E-mail: info@frost.dk • Phone: (+45) 87 61 00 32

We are also to be found as frostdenmark on Facebook,
Instagram, Pinterest and LinkedIn

