

FROST

DENMARK

NOVA2 SOAP DISPENSER 1

Fitting instruction
Montageanleitung
Monteringsvejledning
Monteringsvægledning
Montage hanleiding
Manuel de montage

N1926



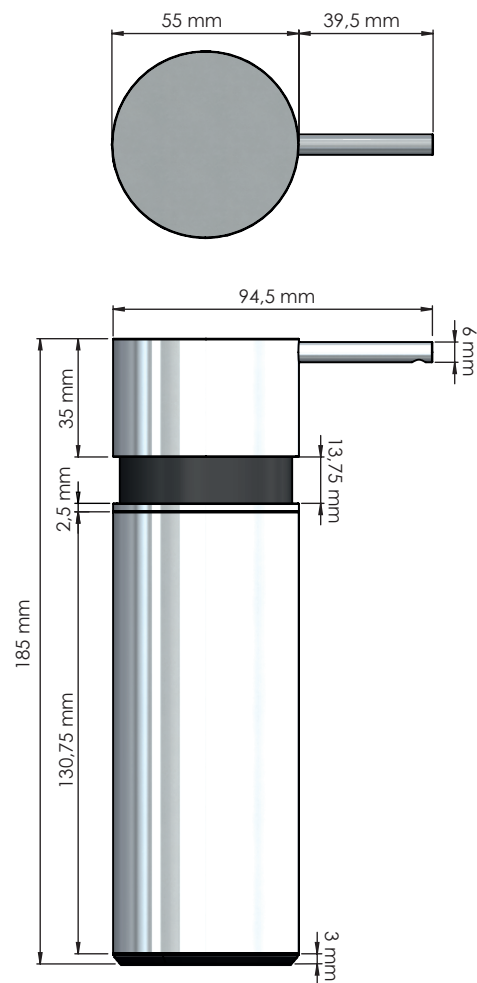
Exclusion of liability

FROST accepts no liability whatsoever for damage to persons or property that occurs or has occurred as a result of improper installation or maintenance, particularly if the safety instructions and other points to note listed are not or have not been observed in full.

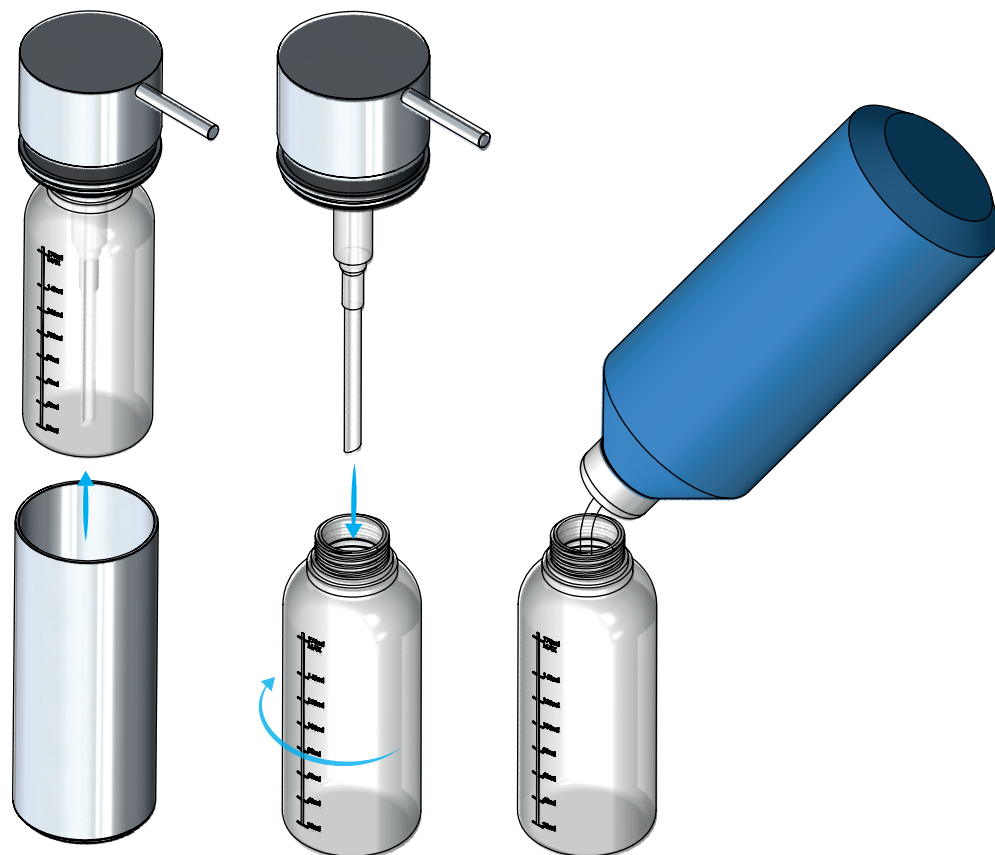
Warning and hazard notices

Improper mounting or use can lead to accidents and serious injuries.

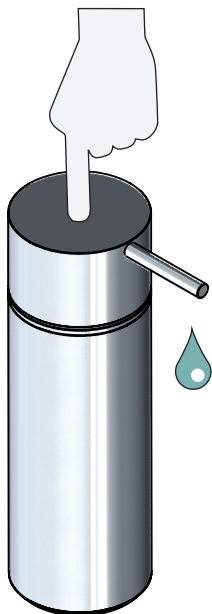
170 ml.



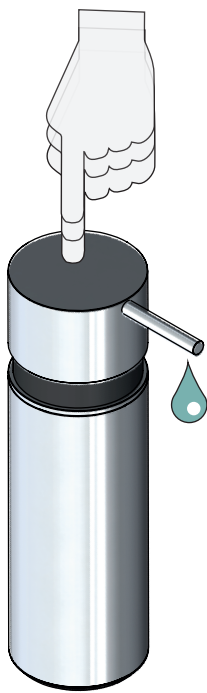
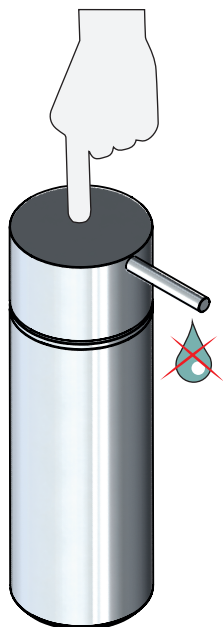
Liquid soap	Cremetvål	pH Neutral
Cremeseife	Crème zeep	pH Neutraal
Cremesæbe	Savon crème	pH Neutre



Operating Buk
Bedienung Bedienung
Betjening Emploi



Maintenance Skötsel
Pflege Verpleging
Vedligeholdelse Entretien



MAINTAINING THE DISPENSER

If the dispenser is not used for a long period of time and becomes clogged, pour warm water into the dispenser and gently pump it to clear the blockage.

All surfaces should be cleaned with a microfiber cloth, glass cleaner or other non-abrasive and gentle agents. If stained, clean with warm soapy water. Use a soft cloth to wipe dry. Soap and cleaning agents must be regularly removed from stainless steel surfaces in order to prevent corrosion-like residues.

ATTENTION

- Never try inserting a sharp object e.g. pin into the soap nozzle. This can irreparably damage the pump and void the warranty.
- Never use solvents or aggressive household cleaners like bleach, acids (e.g. descalers) or ammonia-based bathroom cleaner to clean the product.
- Steel wool and hard brushes can permanently damage the surface of the steel.
- Should brown deposits appear around the lid or pump, remove with soapy water and a soft brush. Hard deposits can be scratched off with your fingernail. In order to avoid this, try changing to a liquid soap with a neutral PH.

FROST
DENMARK

Bavne Allé 32
DK-8370 Hadsten
+45 8761 0032
info@frost.dk

www.frostdenmark.com

N1926
» Brushed



N1926-BOC
» Brushed Copper



N1926-BMG
» Brushed Gold



O1926
» Polished



N1926-C
» Polished Copper



N1926-GO
» Polished Gold



N1926-BCB
» Brushed Black



N1926-B
» Matt Black



N1926-W
» Matt White



Material: Stainless steel, AISI 304
Design: Bønnelycke mdd
Manufacturer: FROST A/S

SOAP DISPENSER 1

