

# FROST

DENMARK

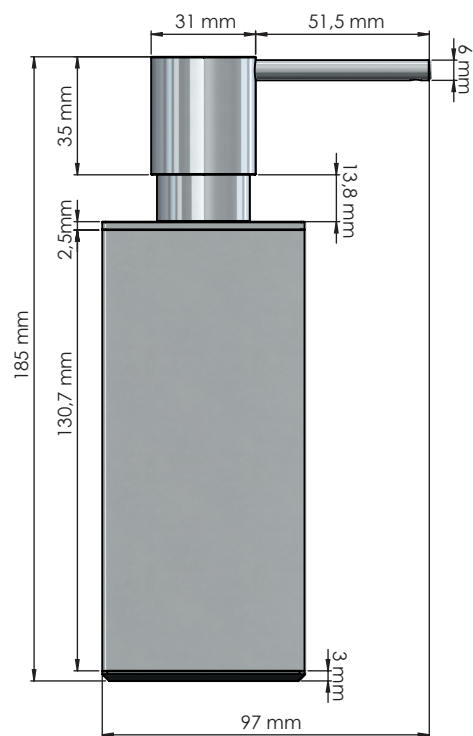
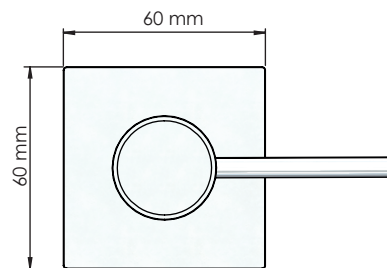
## QUADRA SOAP DISPENSER 5

Fitting instruction  
Montageanleitung  
Monteringsvejledning  
Monteringsvægledning  
Montage hanleiding  
Manuel de montage

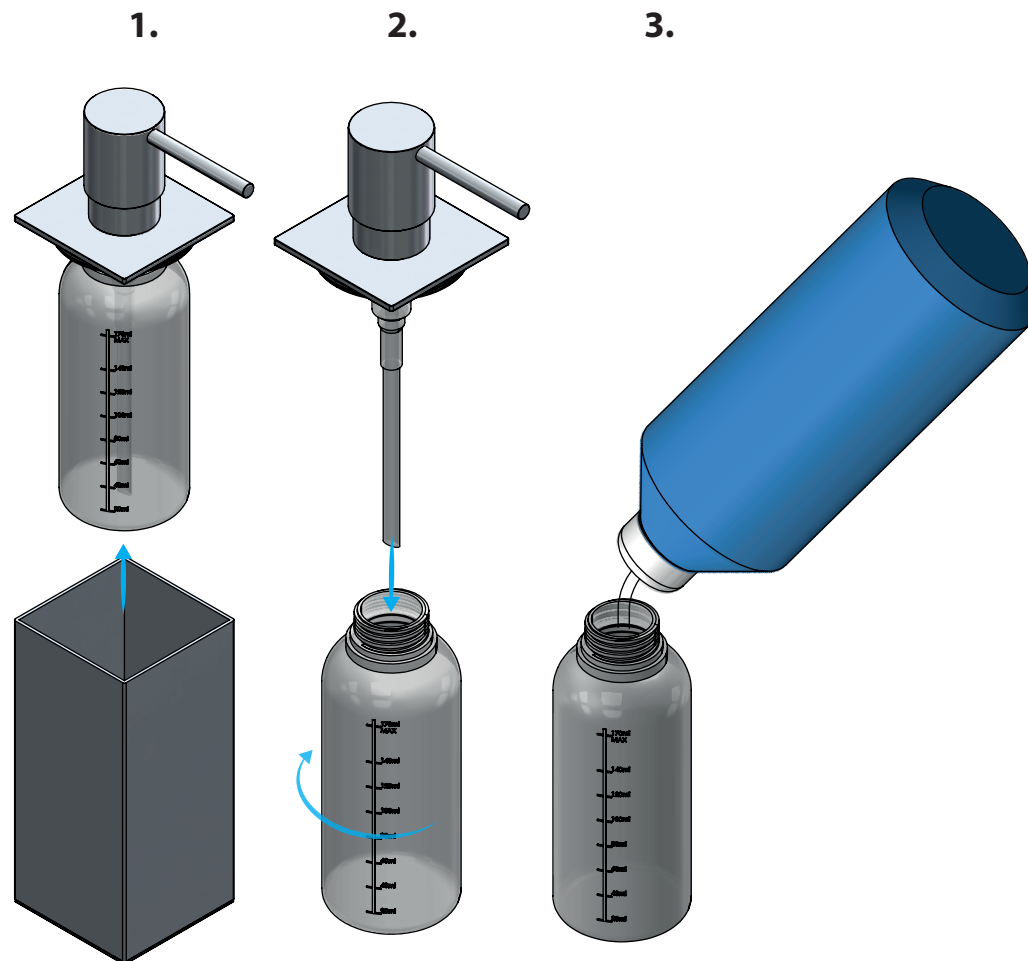
Q3050



170 ml.



Liquid soap	Cremetvål	pH Neutral
Cremeseife	Crème zeep	pH Neutraal
Cremesæbe	Savon crème	pH Neutre



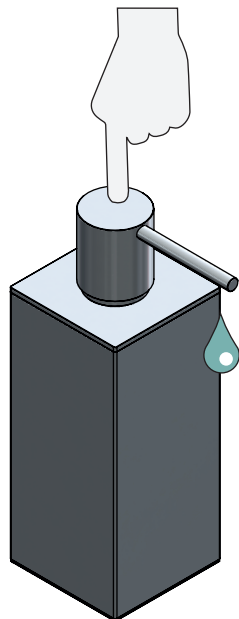
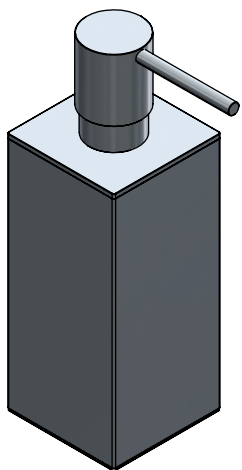
### Exclusion of liability

FROST accepts no liability whatsoever for damage to persons or property that occurs or has occurred as a result of improper installation or maintenance, particularly if the safety instructions and other points to note listed are not or have not been observed in full.

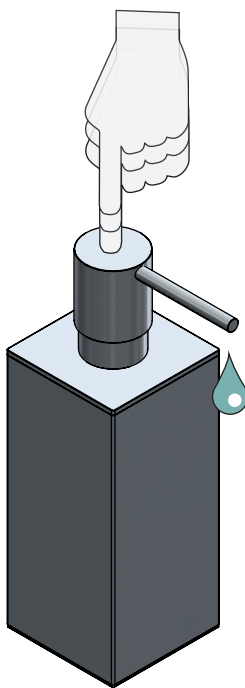
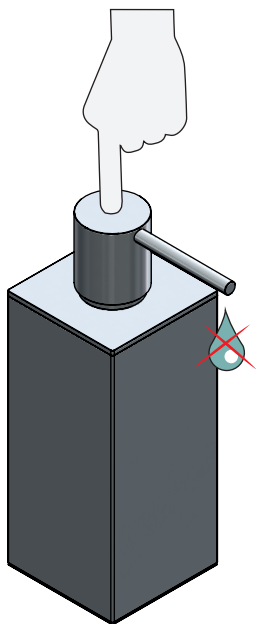
### Warning and hazard notices

Improper mounting or use can lead to accidents and serious injuries.

Operating Buk  
Bedienung Bedienung  
Betjening Emploi



Maintenance Skötsel  
Pflege Verpleging  
Vedligeholdelse Entretien



## MAINTAINING THE DISPENSER

If the dispenser is not used for a long period of time and becomes clogged, pour warm water into the dispenser and gently pump it to clear the blockage.

All surfaces should be cleaned with a microfiber cloth, glass cleaner or other non-abrasive and gentle agents. If stained, clean with warm soapy water. Use a soft cloth to wipe dry. Soap and cleaning agents must be regularly removed from stainless steel surfaces in order to prevent corrosion-like residues.

## ATTENTION

- Never try inserting a sharp object e.g. pin into the soap nozzle. This can irreparably damage the pump and void the warranty.
- Never use solvents or aggressive household cleaners like bleach, acids (e.g. descalers) or ammonia-based bathroom cleaner to clean the product.
- Steel wool and hard brushes can permanently damage the surface of the steel.
- Should brown deposits appear around the lid or pump, remove with soapy water and a soft brush. Hard deposits can be scratched off with your fingernail. In order to avoid this, try changing to a liquid soap with a neutral PH.

**FROST**  
DENMARK

Bavne Allé 32  
DK-8370 Hadsten  
+45 8761 0032  
info@frost.dk

www.frostdenmark.com

Q3050.185.10



Q3050.185.25



Q3050.185.55



Q3050.185.50



Q3050.185.65



Q3050.185.60



Q3050.185.74



Q3050.185.75



Q3050.185.76



**Material:** Stainless steel, AISI 304

**Design:** Bønnelycke mdd

**Manufacturer:** FROST A/S

## SOAP DISPENSER 5

