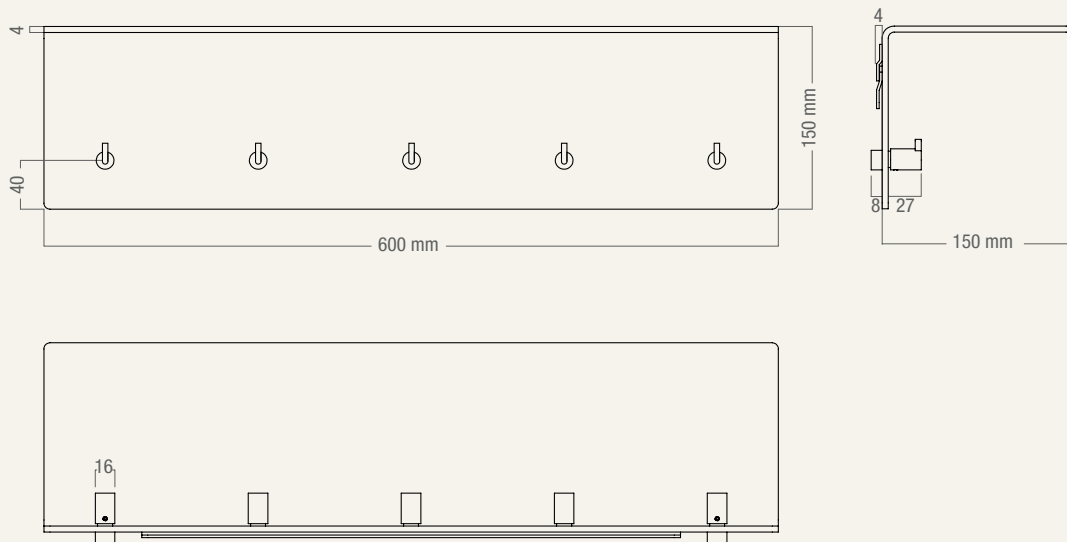


**FROST**  
DENMARK

## COAT RACK 4002

DESIGNED BY BØNNELYCKE MDD

PRODUCT DETAILS, TECHNICAL DETAILS  
AND FITTING INSTRUCTIONS



MATERIAL: ALUMINIUM / STAINLESS STEEL

AVAILABLE IN COMBINATIONS OF THE FROST FINISHES:



U4002-B

MATT BLACK /  
POLISHED STAINLESS



U4002-CB

MATT BLACK /  
POLISHED COPPER



U4002-GB

MATT BLACK /  
POLISHED GOLD



U4002-BB

MATT BLACK /  
POLISHED BLACK



U4002-W

MATT WHITE /  
POLISHED STAINLESS



U4002-CW

MATT WHITE /  
POLISHED COPPER



U4002-GW

MATT WHITE /  
POLISHED GOLD

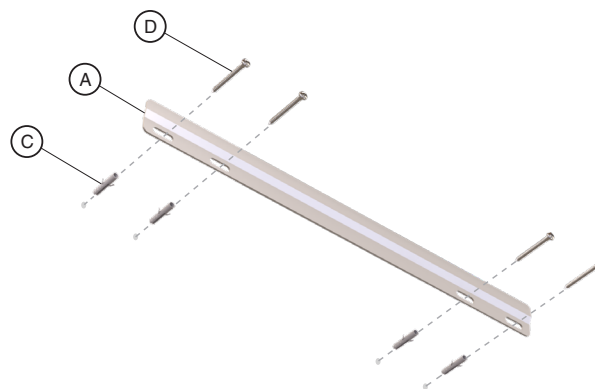
## MOUNTING

1

Mark the placement of the screw holes for mounting the Coat Rack on the wall.

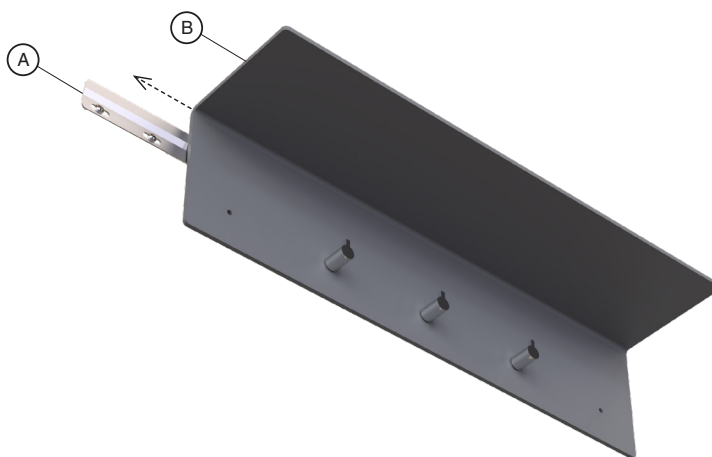
Drill out the marked holes with a 8 mm drill bit and insert the enclosed Ø8x38 mm wall plugs (C)

Secure the mounting bar (A) onto the wall with the Ø5x40 screws (D) and use a Phillips screwdriver with bit PH2 to tighten the screws.



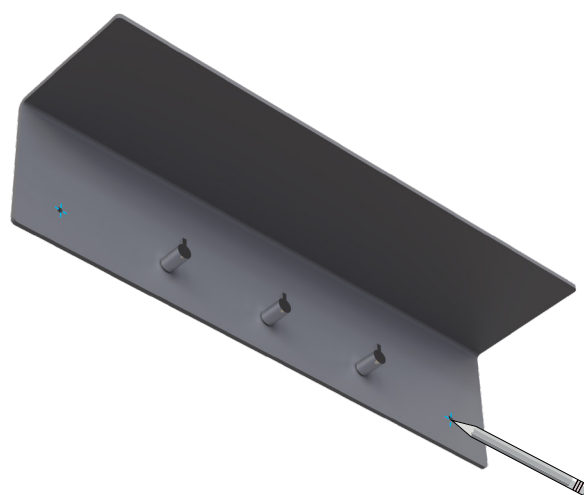
2

Slide the Coat Rack (B) onto the mounting bar (A).



3

Mark the placement of two screw holes as illustrated. Then slide the coat rack (B) off the mounting bar (A).



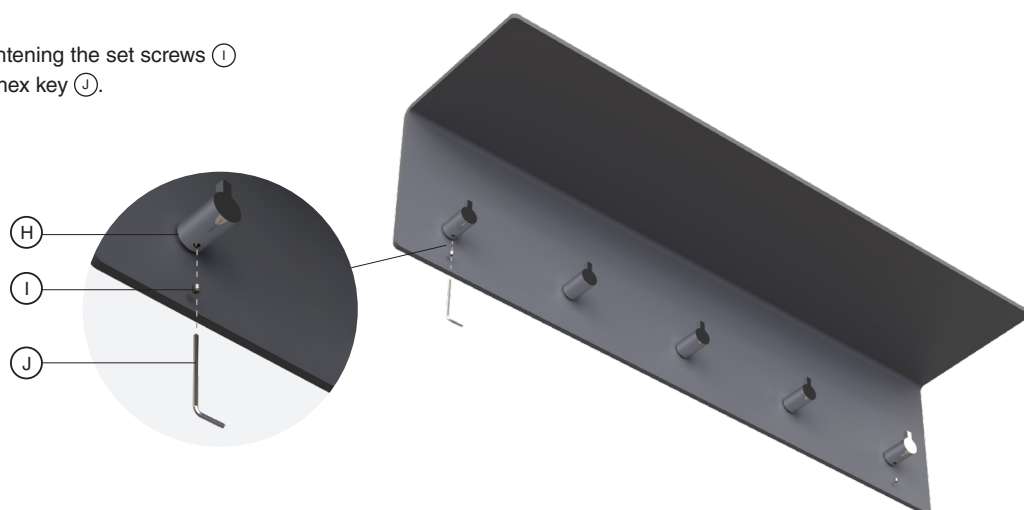
- 4 Drill the marked holes and insert the two Ø6x30 wall plugs (E). Then slide the coat rack (B) back on to the mounting bar (A).



- 5 Secure the coat rack with the brass inserts (F) and Ø4x50 screws (G). Place the hooks (H) on the brass inserts.



- 6 Secure the hooks (H) by tightening the set screws (I) underneath, with the 2mm hex key (J).



#### **CLEANING AND MAINTENANCE**

Surfaces should be cleaned with a microfiber cloth, glass cleaner or other non abrasive and gentle agents.

#### **ATTENTION:**

Never use solvents or aggressive household cleaners like bleach, acids (e.g. descalers) or ammonia-based bathroom cleaner to clean the product. Steel wool and hard brushes can permanently damage the surface of the steel.

#### **EXCLUSION OF LIABILITY**

FROST accepts no liability whatsoever for damage to persons or property that occurs or has occurred as a result of improper installation or maintenance, particularly if the safety instructions and other points to note listed are not or have not been observed in full.

#### **WARNING AND HAZARD NOTICES**

Improper mounting or use can lead to accidents and serious injuries.

**[www.frostdenmark.com](http://www.frostdenmark.com)**

Bavne Alle 32, 8370 Hadsten, Denmark

E-mail: [info@frost.dk](mailto:info@frost.dk) • Phone: (+45) 87 61 00 32

We are also to be found as frostdenmark on Facebook,  
Instagram, Pinterest and LinkedIn

